

Enterprise Manager 10g @ CERN

Christopher Lambert
IT-DES



CERN
openlab



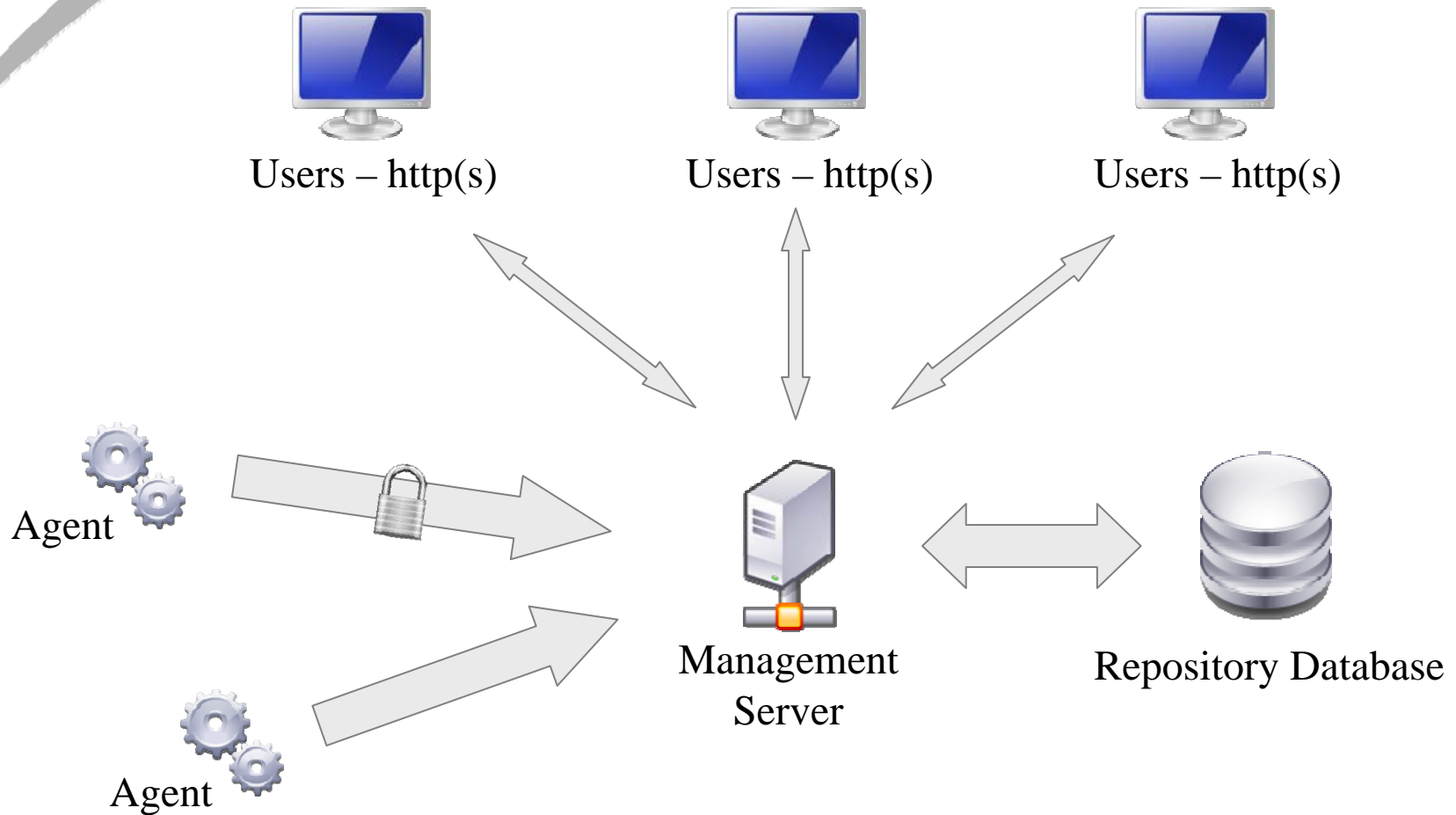
Agenda

- Brief introduction to EM10g
- How we're using it
- Current activities
- Issues we've faced
- Planned work
- Conclusion
- Q & A



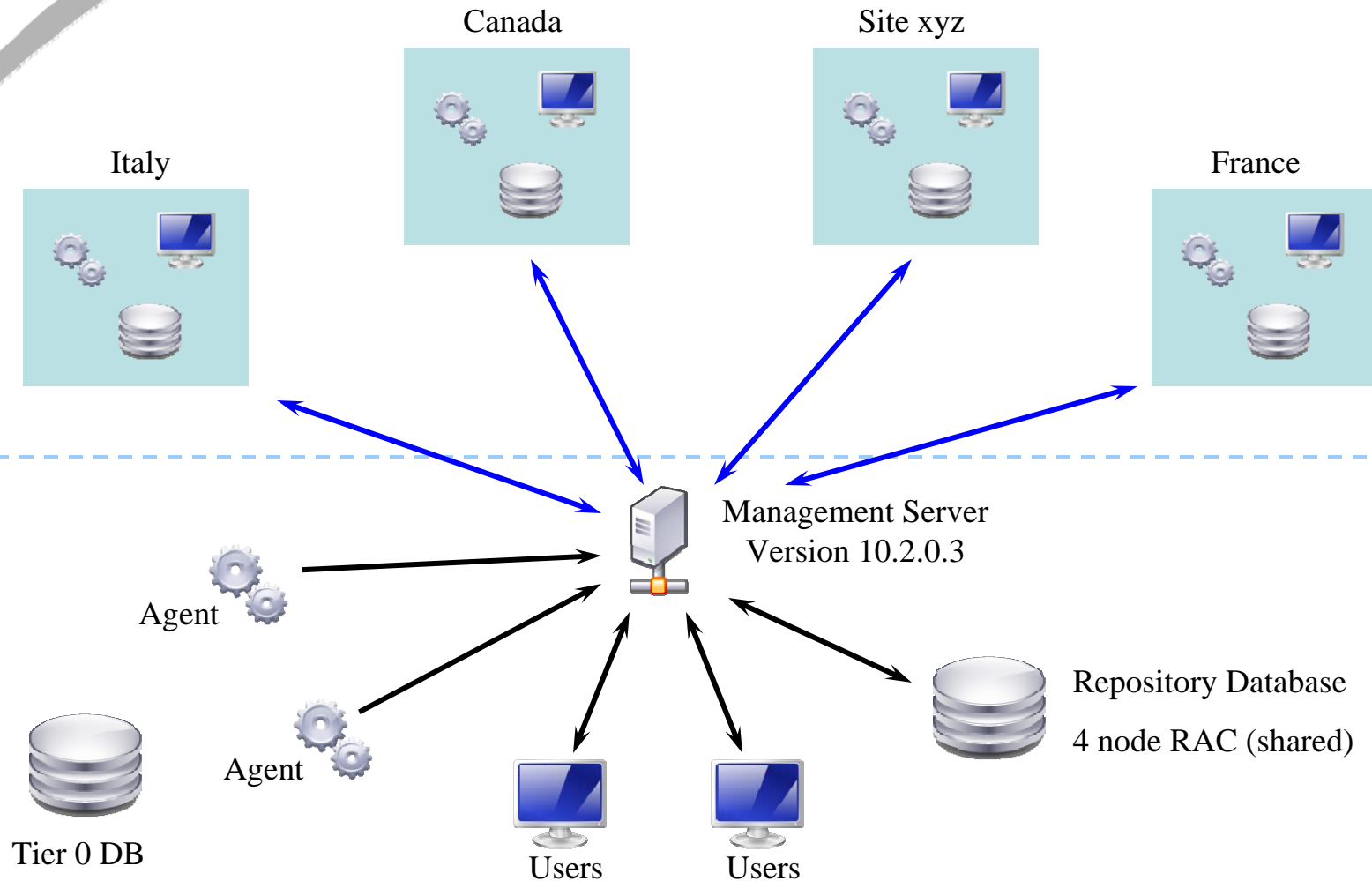
Brief introduction to EM10g

- Integrated Monitoring, Management & Reporting tool
- Hosts, Storage, Oracle products, network etc.
- Alerts users when thresholds breached
- Gives in depth view of entire enterprise



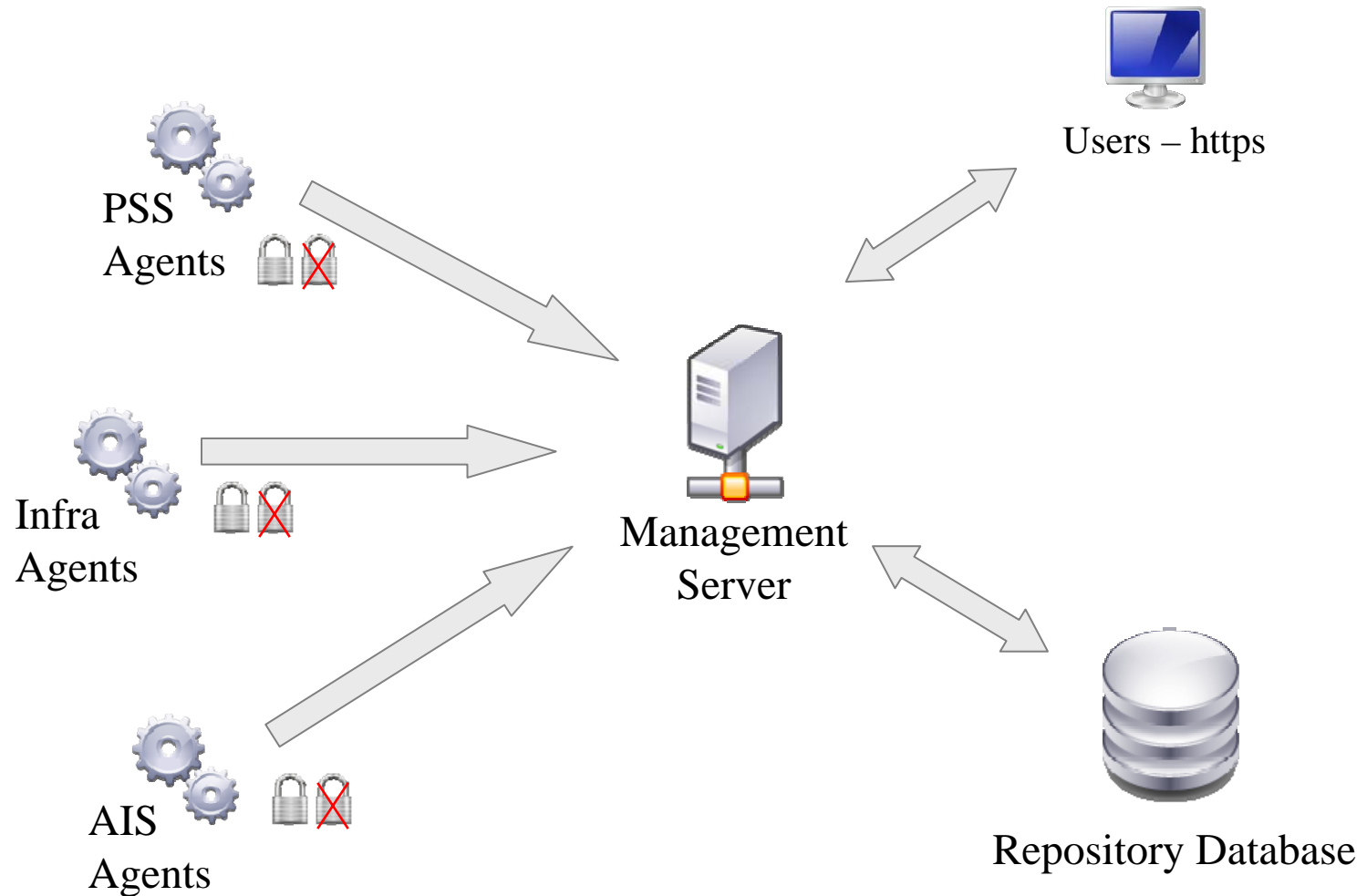


- 2 installations at present
 - 3D project
 - Internal use
- 3D = Distributed Database Deployment
 - CERN is Tier 0 site
 - Remote institutions are Tier 1 sites
 - Proof of concept use
- Internal use
 - AIS, Infrastructure, PSS





- 11 Sites (growing)
- 10-15 databases (RAC)
- 200 targets
- Repository = 2.5gb
 - Only 2 weeks of data
 - Default raw retention is 30 days





Internal EM statistics

- 951 targets

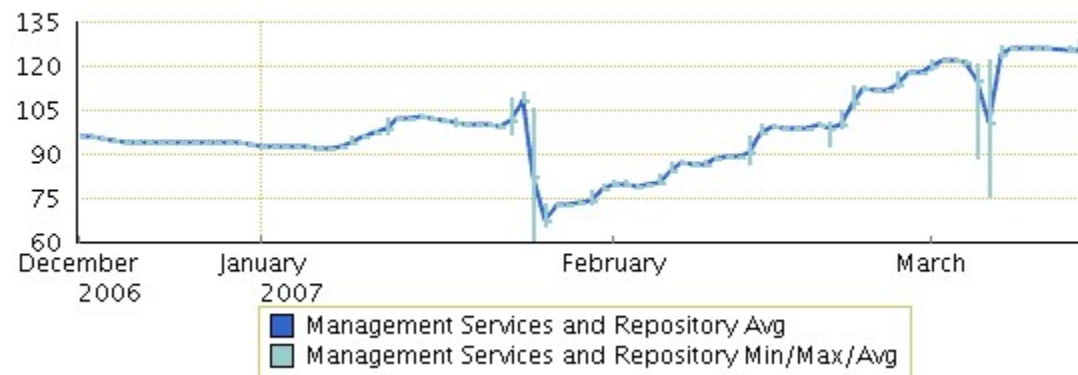
Metric Value



- Re

- Ag

Metric Value



- Lc

- 50



- 3D continuing with proof of concept
 - More sites joining
- Internal system
 - Migrate repository to 2-node RAC (NAS)
 - Monitoring Service
 - Resolve issues with support



Issues we've faced

- Upgrades
- Oracle Support
- AIS Firewall capacity
- iAS & Streams monitoring not so good



- Lots of work planned for future
 - Migrate OMS & load balance
 - Implement web transactions
 - Upgrade to 10.2.0.3
 - Secure agents
 - Implement access controls
 - Implement standards & clean up
 - Use compliance features
 - Test system
- Strategic Customer Programme

- What is EM?
- 3D architecture and stats
- Internal system architecture & stats
- Current & future activities
- Issues we've faced

- EM10g is complex
- Resource hungry
- Used a lot for DB monitoring/management
- Big challenges in 2007
 - Scale up
 - High Availability
 - Expand feature usage



Q & A

Questions?

chris.lambert@cern.ch